

OWNER'S MANUAL

Fender[®]

MUSICAL INSTRUMENTS

1300 E. Valencia, Fullerton, California 92631

MANUAL NO. 011040 (E/GE)

JAZZ BASS

WARRANTY

Fender Musical Instruments warrants this product to be free from defects in materials and workmanship for a period of one year from date of purchase. The warranty herein extends only to the original purchaser at retail of a new product. This warranty shall not apply to products purchased from anyone other than an authorized Fender dealer, or to products which have been subject to alteration, misuse, accident, neglect (such as extremes of temperature and/or moisture), or to wear resulting from normal usage.

This warranty does not include strings which should be changed periodically, the interval between changes depending on the usage and the player.

The warranty herein becomes effective upon receipt of the completed attached owner registration card within ten (10) days after date of purchase. Upon its receipt the owner will be sent a personalized Fender warranty identification card. Presentation of the card within the warranty period will entitle the owner to receive authorized service and repair from any authorized Fender dealer. Such service and repair shall include all labor and materials necessary to make the repairs and replacements covered under the terms of this warranty.

If the product must be returned to the factory service center for repair, it must be accompanied by an authorized Fender dealer's written direction to such effect and a Fender shipping label. Transportation charges to and from the service center shall be borne by the owner unless otherwise specified by law.

This warranty is expressly in lieu of all other agreements and warranties, express or implied, except as may be otherwise required by law.

Litho U.S.A.

OWNER'S MANUAL

Fender[®]
MUSICAL INSTRUMENTS
1300 E. Valencia, Fullerton, California 92631

MANUAL NO. 011040 (E/GE)

JAZZ BASS

JAZZ BASS

Your new Fender Instrument incorporates the highest standards of craftsmanship and quality components. As a Fender Owner you can be proud and self-assured in the knowledge that you have the finest.

Your playing pleasure will be enhanced if you become thoroughly acquainted with all of the features of your instrument. Please read this instruction manual carefully and completely. If you need more information contact your authorized Fender Dealer.

Modern styled head

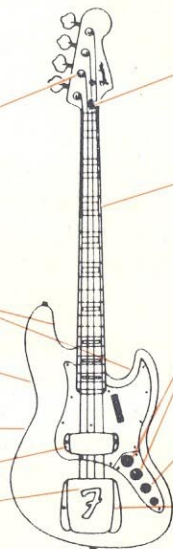
Places keys all on one side for easier tuning. Provides straight pull on all strings. Safety string posts and professional plated machine heads.

Body Design

- Cutaway body for easy access to all frets.
- Off set waist for comfortable playing when seated (A Fender Patent).
- Back is contoured to fit player's body.

Pickups

Rhythm
Lead



Adjustable Truss Rod "Bullet" Nut

Fast Action Thin Neck

Solid Maple neck with micro-adjust tilt mechanism and new quick-adjust truss rod for perfect neck alignment.

Volume Control

Separate control knob for each pickup.

Tone Control

Single knob controls both pickups.

Adjustable Bridge

Individual string height and length adjustments.

FIGURE 1

STRING HEIGHT ADJUSTMENT

First remove the chrome bridge cover. There are four bridge sections each with two height adjusting screws.

To raise the strings turn the screws clockwise. To lower the strings turn the screws counter-clockwise. Low string action makes for easier playing but if the strings are too low they will buzz on the frets.

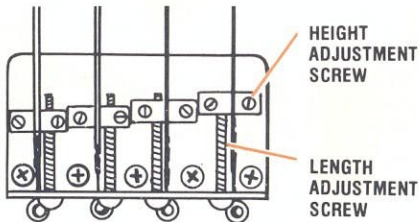


FIGURE 2
BRIDGE

STRING LENGTH ADJUSTMENT

There are four length adjusting screws (Fig. 2). If a string sounds flat when played at the twelfth fret compared with the open string harmonic at the same fret, turn the screw counter-clockwise. If a string sounds sharp to the harmonic, turn the screw clockwise.

PICKUP ADJUSTMENT

The pickups are adjusted to proper height at the factory. To raise a pickup, turn the screws at each end counter-clockwise. To lower, turn the screws clockwise.

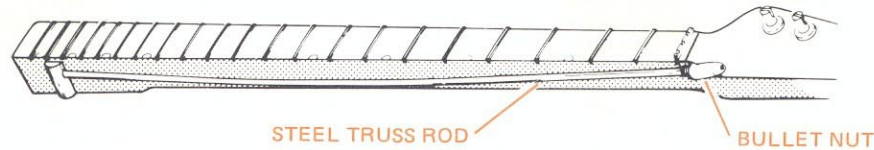


Figure 3

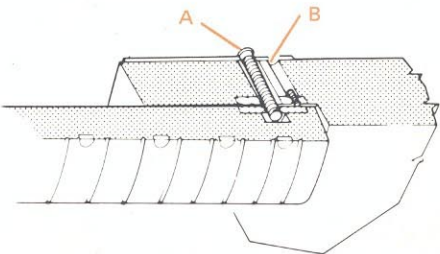
ADJUSTABLE NECK TRUSS ROD

String tension pulls the guitar head forward increasing the distance between the frets and the strings. The steel Truss Rod exerts a counter force to the pull of the strings.

The bullet nut at the guitar head is used to adjust the tension of the Truss Rod. Insert the allen wrench, provided with the guitar, in the bullet nut and tighten it (clockwise) if the middle of the fretboard is bowed

away from the strings. If the neck is bowed toward the strings the bullet nut should be loosened. Usually, only a small adjustment is required, such as a quarter turn. While turning the nut it is helpful to apply pressure to the neck in the same direction as the required adjustment.

NOTE: When loosening the bullet nut, place the guitar on its back with a block (such as a book) under the head and apply pressure to the middle of the neck.

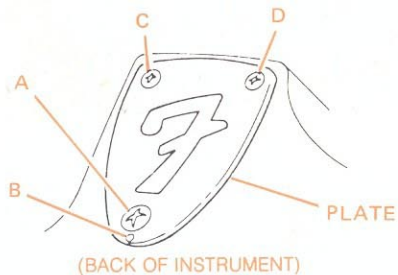


MICRO-TILT NECK ADJUSTMENT

To adjust the alignment of the neck to the body, loosen lock screw "A" two full turns. Screws "C", and "D" need not be loosened. Insert the 3/32 allen wrench (furnished with instrument) through hole "B" in the neck plate and into the set screw in the bottom of the hole. To increase the angle, turn the screw clockwise. To decrease the angle, turn the screw counterclockwise. When desired adjustment is reached, tighten lock screw "A" and recheck, as tightening the lock screw may alter the adjustment slightly.

CASE HARDENED PLATED METAL PARTS

All parts of the Jazz Bass exposed to the player's hand or body are heavily plated and will retain their new-like appearance for a long period of time. In addition, the parts which are subject to mechanical wear are made of case hardened steel, thereby providing ruggedness and durability and eliminating breakdown or malfunction.



(BACK OF INSTRUMENT)

Figure 4

PARTS LIST

Description	Number
Key Assembly	042630
Bridge Section	007706
Bridge Cover (Lead P/U Cover)	010678
Bridge Screw (Length Adj.) -	015842
Adjustment Spring (Length)	018689
Bridge Screw (Height Adj.)	011751
Rhythm Pickup	033753
Lead Pickup	033746
Rhythm Pickup Cover	010660
Control Knobs, 2 Req. (Separate Pickups)	019455
Control Knob, 1 Req. (Master Control)	019513
Strap Button	012344
Finger Rest	018614

ACCESSORIES



HARD SHELL PLUSH LINED CASE

Strong, sturdy. Covered with rich scuff-resistant vinyl fabric. Double stitched seams. Interior lined with soft, velvet like material.

BASS AMPLIFIERS

"Fender amplifiers are engineered to perfectly match the electronic circuitry of your new Fender bass."



BASSMAN 100

FEATURES

- 100 watts rms power with 220 watts peak music power.
- Master Volume Control. In addition to controlling volume of both channels, can be used to control the amount of distortion (when desired). For minimum distortion turn channel volume low, master at maximum. Distortion will be increased by turning channel volume high and master volume low.
- Four heavy duty 12" speakers in specially designed enclosure.
- Two separate channels, each with its own distinctive sound.
- Heavy duty metal corners.
- Numerically graduated controls.



BASSMAN 50

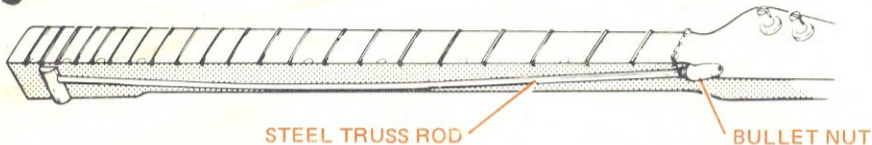
AN OUTSTANDING FAVORITE WITH BASS PLAYERS THE WORLD OVER

- 50-watts RMS power with 110-watts peak music power for strong, positive amplification.
- Two heavy-duty 15" speakers mounted in specially designed enclosure for true tone reproduction.
- Dual channels with separate controls on each.
- Convenient "piggyback" dual unit design. Each amplifier system consists of a piggyback style amplifier unit and one speaker enclosure with two 15" bass speakers.

NEW

Fender®

ADJUSTABLE BULLET TRUSS ROD



String tension pulls the guitar head forward increasing the distance between the frets and the strings. The steel Truss Rod exerts a counter force to the pull of the strings.

The bullet nut at the guitar head is used to adjust the tension of the Truss Rod. Insert the allen wrench, provided with the guitar, in the bullet nut and tighten it (clockwise) if the middle of the fretboard is bowed away from the strings. If the neck is bowed

toward the strings the bullet nut should be loosened. Usually, only a small adjustment is required, such as a quarter turn. While turning the nut it is helpful to apply pressure to the neck in the same direction as the required adjustment.

NOTE: When loosening the bullet nut, place the guitar on its back with a block (such as a book) under the head and apply pressure to the middle of the neck.

PART NO. 012759 (B/GE)

NEW

Fender®

MICRO TILT NECK ADJUSTMENT

To adjust the alignment of the neck to the body, loosen lock screw "A" two full turns. Screws "C" and "D" need not be loosened. Insert the 3/32 allen wrench (furnished with instrument) through hole "B" in the neck plate and into the set screw in the bottom of the hole. To increase the angle, turn the screw clockwise. To decrease the angle, turn the screw counterclockwise. When desired adjustment is reached, tighten lock screw "A" and recheck, as tightening the lock screw may alter the adjustment slightly.

