

washburn®



Electric and Bass Guitars

A hundred years of Washburn®

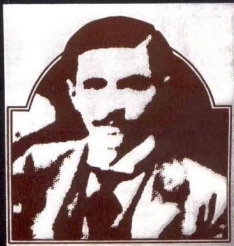
When George Washburn Lyon began making musical instruments in Chicago just over a century ago, mass production hadn't been invented. The only way for a luthier to make a guitar was for him to sit down and create every piece of the instrument himself.

Times certainly have changed, but the way a Washburn is constructed has not. Every product adheres to the same basic principle which George Washburn initiated in 1876... *hand made quality*. This principle resulted in "first place" awards at Music Expositions held throughout the world. Today, the challenge for the Washburn company is to maintain a high quality, hand-crafted instrument in the face of increasing pressure for mass production needed to meet the ever-growing demand.

This challenge was accepted by an enterprising guitar maker, Rudy Schlacher, and a professional musician, Rick Johnstone. Realizing the need for quality, reasonably priced guitars, banjos and mandolins, the partners took over and expanded the Washburn Company.

Because the pair have operated successful retail music stores for many years, they are responsive to the demands of aspiring musicians. Their goal is to maintain the original workmanship of George Washburn while implementing the most recent techniques that have improved instrument making.

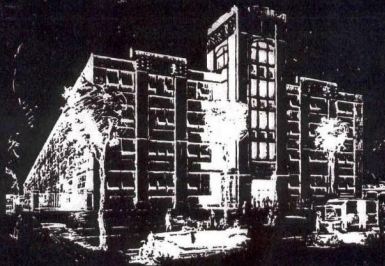
The new Washburns have been completely redesigned to meet the exacting demands of today's musicians. Over the last twenty years Japan has become the home of fine craftsmanship for many products, including musical instruments. All the Washburn designs are now translated by Japan's most experienced craftsmen, thus assuring the consistent quality and workmanship for which they are known. Final inspection, however, is reserved for the Chicago workshop, where each instrument is *individually* set up and fully adjusted.



The advent of Rock Music presented a new challenge for Washburn's expanding product lines. The result has been the Wing Series, Stage Series and Festival Series guitars. Washburn's traditional craftsmanship has now been combined with state of the art electronic techniques.

The complete Washburn line provides over eighty models designed for amateur as well as professional musicians. From classic to electric, from banjo to mandolin, each instrument offers the same tradition and quality which has made Washburn world-famous.

Whichever Washburn-model you purchase, you're buying more than one hundred years of instrument-making history.

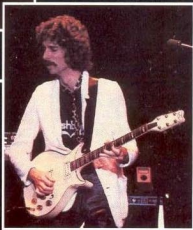
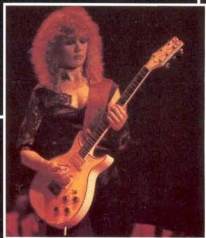
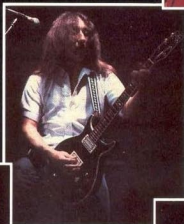
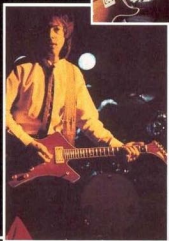


An Age Old Tradition Takes Flight



Washburn accepted the challenge of producing first class electrics without compromising workmanship or design. By combining fine quality hardwoods with functional designs and sensible "asked for" features, they are building guitars for today's most demanding musicians. This commitment to blend traditional craftsmanship and original designs with innovative electronics has created a long awaited union of the old and the new.

**Do yourself a favor
check out a Washburn.**





Eagle Rosewood

Eagle Ivory

Eagle Maple

Eagle

Wing Series

- Neck-through body construction
- 5-piece rock maple and rosewood neck
- Solid ash body with hand carved select rosewood or maple arch-top
- Strings through body anchored in back
- Polished ebony fingerboard with jumbo nickel silver frets
- Contoured back
- Washburn "Negative Heel" design
- Washburn "Power Sustain" humbucking pickups

- Push-pull coil disconnects in volume controls
- Washburn "Harmonic Lock" bridge system
- "Equalizing" brass nut
- Brass or chrome control knobs
- Deluxe machine heads
- Chrome or gold plated hardware
- Wood control and truss rod cover
- Custom bound and inlay



Falcon Maple

Falcon Sunburst

Falcon Rosewood

Falcon

Wing Series

- Neck-through body construction
- 5-piece rock maple and rosewood neck
- Solid ash body with hand carved rosewood or maple arch-top
- Strings through body anchored in back
- Polished ebony fingerboard with jumbo nickel silver frets.
- Washburn "Negative Heel" design
- Washburn "Power Sustain" humbucking pickups
- Push-pull coil disconnects in volume controls
- Washburn "Harmonic Lock" bridge system
- "Equalizing" brass nut
- Deluxe machine heads
- Chrome plated hardware
- Bound body, fingerboard and head
- Brass position markers



Hawk Grained Brown



Hawk Tobacco Sunburst



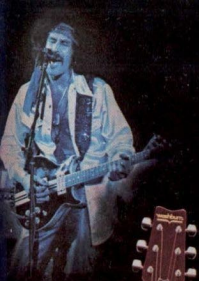
Hawk Wine Red

Hawk

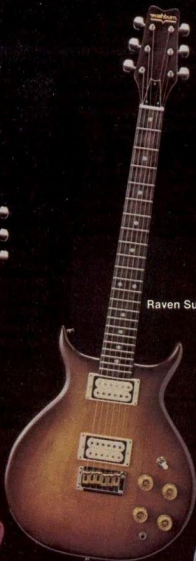
Wing Series

- Neck-through body construction
- 3-piece rock maple and rosewood neck
- Solid ash body with carved arch-top
- Strings through body anchored in back
- Polished rosewood fingerboard with jumbo nickel silver frets
- Washburn "Negative Heel" design
- Washburn "Power Sustain" humbucking pickups

- Washburn "Harmonic Lock" bridge system
- "Equalizing" brass nut
- Deluxe machine heads
- Chrome plated hardware
- Wood control and truss rod cover
- Bound body and fingerboard
- Pearl dot position markers



Raven Wine Red



Raven Sunburst



Scavenger




Scavenger Ivory

Wing Series

- Solid mahogany body with carved arch-top
- Detachable rock maple neck
- Strings through body anchored in back
- Polished rosewood fingerboard
- Humbucking pickups
- Precision die cast bridge with brass saddles
- Deluxe machine heads
- Individual volume and tone controls with pickup selector

- Solid mahogany body with carved arch-top
- Detachable rock maple neck
- Strings through body anchored in back
- Polished rosewood fingerboard
- Single coil split pickup
- Precision die cast bridge with brass saddles
- Deluxe machine heads



A-20-V
Cherry Sunburst/Vibrato

The image shows a Washburn A-20-V electric guitar with a cherry sunburst finish. It features a vibrato tailpiece, two humbucking pickups, and a single control knob. The guitar is shown from a front-three-quarter view against a dark background.



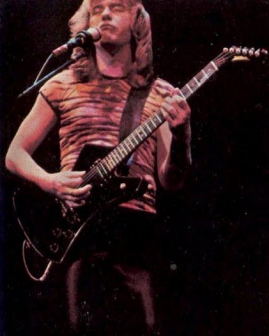
A-20
Black/Gold Trim

The image shows a Washburn A-20 electric guitar with a black finish and gold trim. It features a fixed bridge, two humbucking pickups, and two control knobs. The guitar is shown from a front-three-quarter view against a dark background.

A-20

Stage Series

- Neck-through body construction
- 3-piece rock maple and rosewood neck
- Solid ash body with select flamed-maple top
- Strings through body anchored in back
- Polished ebony fingerboard with jumbo nickel silver frets
- Washburn "Power Sustain" humbucking pickups
- Push-pull coil disconnects in volume controls
- Shielded control compartment
- Washburn "Harmonic Lock" bridge system
- "Equalizing" brass nut
- Deluxe machine heads
- Chrome plated hardware
- Wood control and truss rod covers
- Bound body, fingerboard and head
- Brass position markers



B-20 II
Cherry Sunburst



B-20 II
Black/Gold Trim

B-20

Stage Series

- Neck-through body construction
- 3-piece rock maple and rosewood neck
- Solid ash body with select flamed-maple top
- Strings through body anchored in back
- Polished ebony fingerboard with nickel silver frets
- Washburn single and split coil pickups
- Washburn "Sure Track" brass bridge
- "Equalizing" brass nut

- Deluxe machine heads
- Chrome plated hardware
- Wood control and truss rod covers
- Bound body, fingerboard and head
- Brass position markers



A-10
Ivory



A-10
Black

A-10

Stage Series

- Solid ash body
- Fixed rock maple neck
- Polished rosewood fingerboard with nickel silver frets
- Strings through body anchored in back
- Washburn "Power Sustain" humbucking pickups
- Individual controls with 3-way pickup selector
- Washburn "Harmonic Lock" bridge system
- Deluxe machine heads
- Chrome plated hardware
- Pearl dot position markers

Specifications

	Body Material & Construction	Neck & Fingerboard Material & Construction	Pickups & Controls	Bridge	Hardware	
	Ash Body Mahogany Body Maple Top Rosewood Top Ash Top Arch Top Flat Top	5 Piece Neck 3 Piece Neck 1 Piece Neck Neck-Through Fixed Neck Detachable Neck Ebony Fingerboard Rosewood Fingerboard Rosewood Brass Nut Bone Nut Bound Edges Wood Truss Rod Cover Nickle Silver Frets Steel Reinforced	Power Sustain Double Coil Split Coil Single Coil Coil Disconnect Channel Input Wood Control Plate	Harmonic Lock Bridge Brass Saddles Strings Through Body Vibrato	Deluxe Machine Heads Gold Plated Chrome Plated Brass Knobs Chrome Knobs	
Guitars						
Eagle R						
Eagle CS						
Eagle I						
Falcon R						
Falcon M						
Falcon SB						
Hawk						
Raven						
A-20v						
A-20						
A-10						
Basses						
B-20						
Scavenger						

WASHBURN LIMITED LIFETIME WARRANTY

Each Washburn instrument has been constructed using selected materials to meet the highest standards of workmanship. All Washburns carry a limited lifetime warranty against defects in material and workmanship to the original purchaser.

Distributed World Wide



Australia
Warehouse Sound Co.
338 Brunswick St. Fitzroy
Victoria 3065 Australia

Canada
Boosey & Hawkes
279 Yorkland Blvd.
Willowdale M2J 1S7
Ontario Canada

Denmark
Brodr. Jorgensen
104 Flyvards Alle
DK-2900 Hellerup
Denmark

U.K.
Brodr. Jorgensen UK Ltd.
Great West Trading Estate
983 Great West Rd.
Brentford Middx TW8 9DN

France
Musikengro
102 Ave Jean Jaures
69367 Lyon France

Germany
George Higl Musikinstrumente
Wiedenzhausenerstrasse 8
8061 Orthofen B. Muenchen
West Germany

Japan
Daion Co. Ltd.
5-358 Motomachi Naniwa-ku
Osaka 556 Japan

Nederland
A. Voerman & ZN, BV
Vanadiumweg 17
3800 AE Amersfoort Nederland

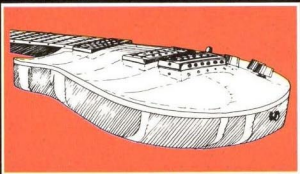
Norway
Brodr. Jorgensen
Mossevein Vinterbro
1400 Ski Norway

Portugal
Teclado
R. Firmeza, 460
4000 Porto, Portugal

Sweden
Englund Musik AB
Box 610
12606 Haegersten Sweden

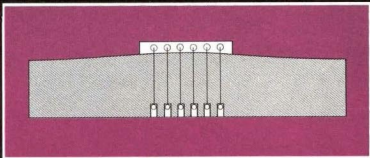
Switzerland
Guitars by Levinson
Burgfelderstrasse 189
4055 Basel Switzerland

Features You Should Know About Washburn®



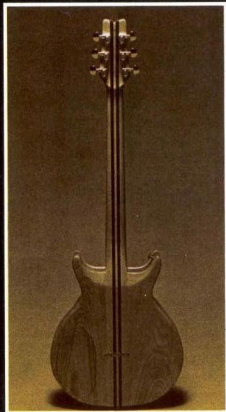
Arch-top Construction

The hand carved arch-top places added mass and height under the bridge system, resulting in improved playability, sustain and traditional appearance.



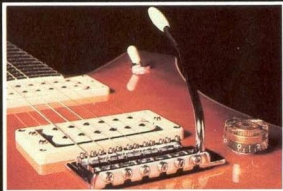
String Through Body

Anchoring strings from the back through the body assures maximum string pressure on each saddle, enabling the strings to actuate faster and vibrate longer.



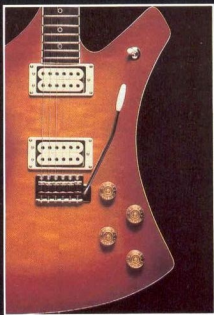
Neck-Through Body

This state of the art construction transmits the harmonic frequencies of the neck into the body without interruption, while improving rigidity, sustain and access to the highest notes.



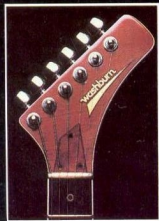
"Power Sustain" Pickups

Washburn created this pickup to provide maximum attack and sustain without sacrificing tone or versatility. "Power sustain" pickups in conjunction with the "Harmonic Lock" bridge system and neck-through body construction provide optimum performance on stage as well as in the studio.



Push-Pull Coil Disconnect

This easily accessible feature is built into each volume control and provides an unlimited array of tone combinations. Clear-cutting country sounds are transformed to full blown rock leads by depressing the volume knob.



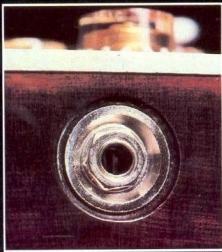
"Equalizing" Brass Nut

Optimum performance is achieved by creating a balance between open and fretted notes without absorbing string energy.



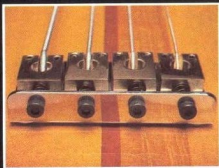
"Harmonic Lock" Bridge System

Our patented side locking system makes the individually adjustable brass saddles an integral part of the bridge. The added rigidity provides maximum attack and sustain while permanently locking perfect string height and intonation.



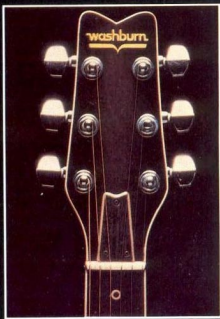
Channel Input

The recessed steel casting which is securely anchored in the body guarantees trouble free performance.



"Sure Track" Bass Bridge

Precision guides have been engineered into the bridge base to eliminate lateral movement of the saddles. The fully adjustable, massive brass saddles add to the rigidity and tonality of the instrument.



Deluxe Machine Heads

Precision die cast, permanently lubricated and sealed, the adjustable, fast action 13-1 ratio gear assures accurate tuning.