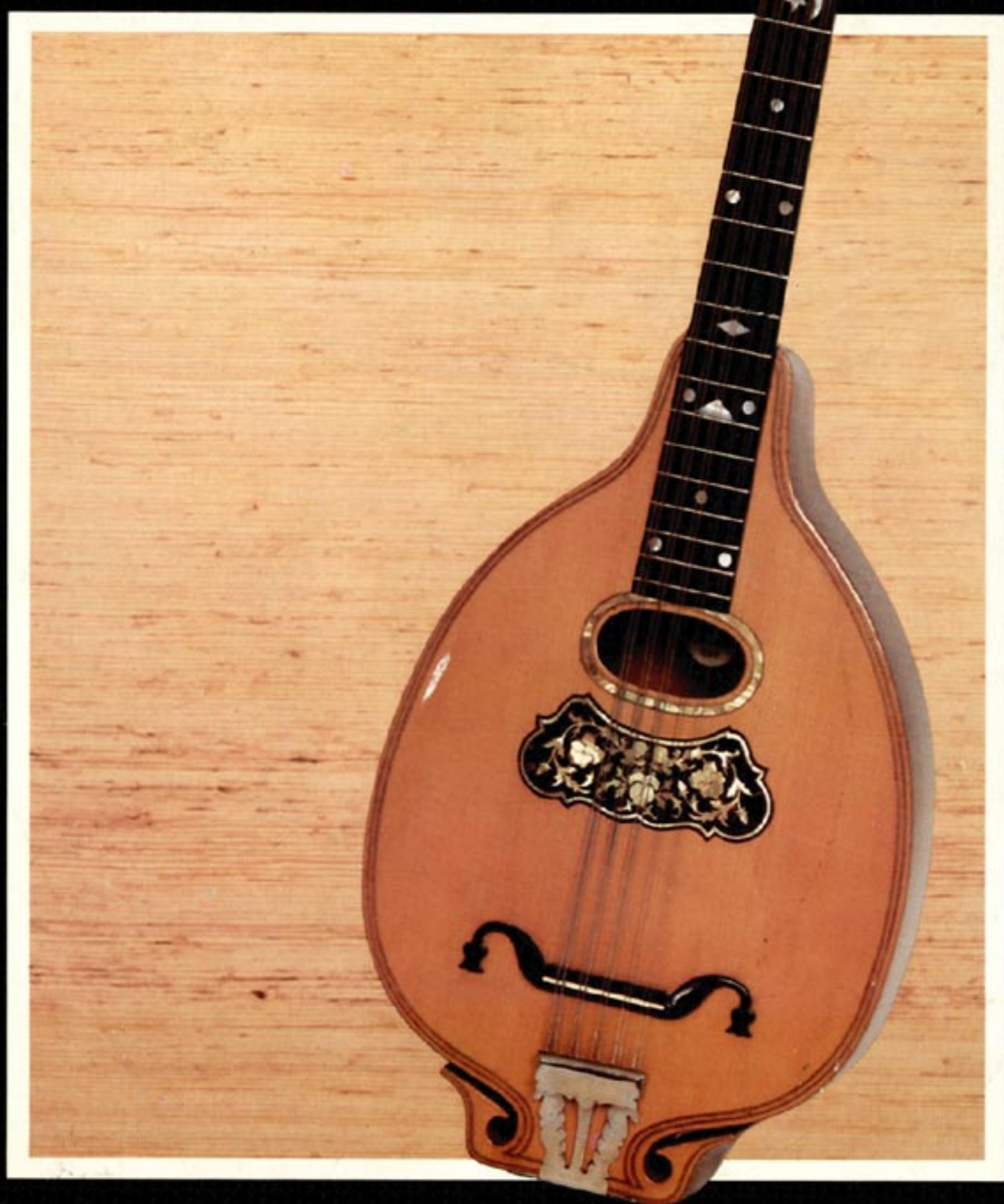


Gibson Guitars



CONTENTS

PROLOGUE	5
----------------	---

PROFESSIONAL SERIES

CUSTOM SEGMENT

Kalamazoo Award Model	6
Super V CES	7
Super 400CES	8
L-5CES	9
JSD	10
Byrdland	11
Super 400C	12
L-5C	13
Howard Roberts Artist	14
Howard Roberts Custom	15
Howard Roberts Fusion	16
ES-175/CC	17
ES-175D	18

LES PAUL SEGMENT

Les Paul Artist	19
Les Paul Artisan	20
Les Paul Custom	21
Les Paul Pro Deluxe	22
Les Paul Standard	23
Les Paul Deluxe	24

SOLID BODY SEGMENT

Flying V-II	25
L-5S	26
Explorer II	27
335-S Deluxe	28
SG Standard	29
EDS-1275	30

RD SEGMENT

RD Artist	31
RD Artist Bass	32

THIN LINE SEGMENT

ES Artist	33
ES-355TDSV	34
ES-347TD	35
ES-345TDSV	36
ES-335PRO	37
ES-335TD	38

BASS SEGMENT

"Ripper" L-9S	39
G-3	40
Grabber	41

ACOUSTIC SEGMENT

F-5L	42
All American	43
Florentine	44
800 Series	45
250 Series	46
J-200	47
Dove	48
Heritage	49
Hummingbird	50
J-55	51
J-50	52
J-45	53
J-40	54

FIREBRAND SERIES

The "Paul" (Standard)	55
The "SG" (Standard)	56
335-S Custom	57
The "Paul" (Deluxe)	58
The "SG" (Deluxe)	59
335-S Standard	60

SONEX SERIES

Sonex-180 Custom	61
Sonex-180 Standard	62
Sonex-180 Deluxe	63

Note: The "Crank" and "Posi-Lok" will be available on designated models late 1980.

PROLOGUE

FROM 1894 TO YEAR AFTER TOMORROW

Over more than three quarters of a century, Gibson has established a reputation and heritage, second to none. From Orville Gibson's one man workshop in 1894 and a Company with only 13 employees in downtown Kalamazoo, Michigan in 1902, Gibson has expanded steadily and dramatically through the years.

History has recorded many instances of individual achievements that lasted only a short time, then died with the individual. Gibson has maintained and passed on a respect and acclaim for its products that has grown from generation to generation. When the demand or needs changed, Gibson has led the way by introducing countless FIRSTS in the fretted instrument field that have been widely copied and imitated.

The unparalleled love and respect for its products throughout the music world has been earned by proven quality, expert craftsmanship, great performance, remarkable durability, and excellent service.

Gibson's research, dedication, and close affinity with players from all walks of life has enabled it to provide by far the greatest variety of fretted instruments and accessories to fit the changing times and individual needs.

Players, Historians, and Authors, from all parts of the globe are writing in detail about certain individual Gibson product lines and about the people that have had a hand in bringing about this unusual and romantic appeal. Reprints of older Gibson catalogs and pamphlets are being published and are selling like hot cakes. The requests for information about Gibson and its products is so continuous and unabated that it is practically unreal!

Certain Gibson mandolins, acoustic guitars, mastertone banjos, double cutaway electrics, Les Paul electrics, Flying V's, Explorers, Firebirds and many other models are so much in demand by collectors and players that their values have multiplied beyond belief—some more than 50 times their original price.

The Gibson name and its heritage has been in the past, is today, and will be tomorrow a most important segment of the history of fretted instruments.

Julius Bellson
May 12, 1978

KALAMAZOO AWARD MODEL



BODY SPECIFICATIONS

Carved and hand graduated spruce top tuned to a precise pitch for maximum acoustical resonance • Carved and graduated back of exquisitely figured maple • Solid maple matching rims • Graceful Venetian cutaway • Top and back-bound in multiple black/white binding • Bound "f" holes • Adjustable ebony saddle • Pearl inlaid ebony bridge base perfectly fitted to the top for maximum acoustical results • Gold-plated tailpiece with beautiful Abalone inlaid insert • Bound matching woodgrain pickguard with unique Abalone inlay • Pickguard mounted volume and tone potentiometers • Acoustic and electronic components perfectly matched for the finest in natural acoustical reproduction • BJB gold-plated, jazz pickup • The new ultra-safe Gibson "Posi-Lok"™ strap button • Body size: Length 20-1/2," width 17," depth 3-1/8"

NECK SPECIFICATIONS

5-piece solid maple and insert construction • Width at fingerboard nut 1-11/16" • Ebony fingerboard with ornate Abalone inlays and corresponding shell side dots • Bound peghead and fingerboard • Exquisite Abalone inlaid peghead • Gold-plated, individual machine heads with the exclusive Gibson "Crank"™ button • Gibson adjustable truss rod • Distinctive truss rod cover • 20 frets • 25-1/2" scale length

KALAMAZOO AWARD MODEL • Antique Sunburst, or Natural finish
Complete with hardshell Faultless plush lined case

SUPER V CES



BODY SPECIFICATIONS

Custom carved spruce top • Carved maple back • Solid maple matching rims • Graceful Venetian cutaway • Top and back bound in multiple black/white binding • Bound "f" holes • Adjustable ebony saddle with ebony bridge base contoured to outside top dimensions for maximum acoustical resonance • New exclusive Gibson gold-plated individually fingered down pressure adjustment jazz tailpiece • Bound pickguard • Two gold-plated Gibson Humbucking pickups • Black speed knobs for individual volume and tone setting • 3-position toggle switch for pickup selection (individual or both pickups simultaneously) • The new ultra-safe Gibson "Posi-Lok"™ strap button • Body size: Length 21", width 17", depth 3-1/4"

NECK SPECIFICATIONS

5-piece solid maple and mahogany construction • Width at fingerboard nut 1-11/16" • Ebony fingerboard with divided Pearl block inlays and corresponding shell side dots • Bound peghead and fingerboard • Pearl inlaid head veneer • Deluxe gold-plated, individual machine heads with the exclusive Gibson "Crank"™ button • Gibson truss rod with polished brass engraved truss rod cover • 20 frets • 25-1/2" scale length

SUPER V CES • Antique Sunburst or Natural finish

SUPER V BJB • Antique Sunburst or Natural finish • Single floating jazz pickup version (not shown)

Complete with 600 Faultless plush lined case

SUPER 400CES



BODY SPECIFICATIONS

Custom carved spruce top • Carved maple back • Solid maple matching rims • Graceful Venetian cutaway • Top and back bound in multiple black/white binding • Bound "f" holes • Adjustable ebony saddle with Pearl inlaid ebony bridge base contoured to outside top dimensions for maximum acoustical resonance • Gold-plated engraved tailpiece • Deluxe bound pickguard • Two gold-plated, Gibson Humbucking pickups with individual volume and tone controls • 3-position toggle switch for pickup selection (individual or both pickups simultaneously) • The new ultra-safe Gibson "Posi-Lok"™ strap button • Body size: Length 21-3/4", width 18", depth 3-1/4"

NECK SPECIFICATIONS

5-piece solid maple and mahogany construction • Width at fingerboard nut 1-11/16" • Ebony fingerboard with divided Pearl block inlays and corresponding shell side dots • Bound peg-head and fingerboard • Pearl inlaid head veneer • Deluxe, gold-plated, individual machine heads with the exclusive Gibson "Crank"™ button • Gibson truss rod with unique truss rod cover • 20 frets • 25-1/2" scale length

SUPER 400CES • Antique Sunburst or Natural finish

Complete with 400 Faultless plush lined case

L-5CES



BODY SPECIFICATIONS

Custom carved spruce top • Carved maple back • Solid maple matching rims • Graceful Venetian cutaway • Top and back bound in multiple black/white binding • Bound "f" holes • Adjustable ebony saddle with Pearl inlaid ebony bridge base contoured to outside top dimensions for maximum acoustical resonance • Gold-plated tailpiece with contrasting engraved silver-plated centerpiece that reads "L-5" • Deluxe bound pickguard • Two Gibson Humbucking pickups with individual volume and tone controls • 3-position toggle switch for pickup selection (individual or both pickups simultaneously) • The new ultra-safe Gibson "Posi-Lok"™ strap button • Body size: Length 21", width 17", depth 3-1/4"

NECK SPECIFICATIONS

5-piece solid maple and mahogany construction • Width at fingerboard nut 1-11/16" • Ebony fingerboard with Pearl block inlays and corresponding shell side dots • Bound peghead and fingerboard • Pearl inlaid head veneer • Deluxe gold-plated, individual machine heads with the exclusive Gibson "Crank"™ button • Gibson truss rod with distinctive truss rod cover • 20 frets • 25-1/2" scale length

L-5CES • Natural or Antique Sunburst finish

Complete with 600 Faultless plush lined case

JSD



BODY SPECIFICATIONS

Custom carved spruce top • Carved maple back • Solid maple matching rims • Graceful Venetian cutaway • Top and back bound in multiple black/white binding • Bound "f" holes • Adjustable ebony saddle with Pearl inlaid ebony bridge base contoured to outside top dimensions • Deluxe bound fingerrest • New, exclusive, gold-plated, individually fingered down pressure adjustment jazz tailpiece • The new ultra-safe Gibson "Posi-Lok"™ strap button • JS model available in double or single pickup version • JSD: Two powerful, gold-plated Gibson Humbucking pickups with custom bound pickguard • Two volume, two tone and one pickup selector switch installed on pickguard: Rear pickup mounted to pickguard • JS: One powerful, gold-plated Gibson Humbucking pickup with volume potentiometer installed on pickguard • Body size: Length 20-1/2," width 17," depth 2-7/8"

NECK SPECIFICATIONS

5-piece solid maple and mahogany construction • Width at fingerboard nut 1-3/4" • Ebony fingerboard with divided Pearl block inlays and corresponding shell side dots • Deluxe, gold-plated, individual machine heads with the exclusive Gibson "Crank"™ button • Gibson truss rod with distinctive truss rod cover • 20 frets • 25" scale length

JSD DOUBLE PICKUP • Natural or Antique Sunburst finish

JS SINGLE PICKUP (Not Shown) • Natural or Antique Sunburst finish
Complete with Deluxe Faultless hard shell case and zipper case cover

BYRDLAND



BODY SPECIFICATIONS

Custom carved spruce top • Curly maple back and maple rims • Graceful Venetian cutaway • Top and back bound in multiple black/white bindings • Bound "f" holes • Gold-plated Tune-O-Matic bridge with Pearl inlaid ebony base • Gold-plated tailpiece • Deluxe bound pickguard • Two powerful Gibson gold-plated Humbucking pickups with individual volume and tone controls • 3-position toggle switch for pickup selection (individual or both pickups simultaneously) • The new ultra-safe Gibson "Posi-Lok"™ strap button • Body size: Length 21", width 17", depth 2-1/8"

NECK SPECIFICATIONS

5-piece solid maple and mahogany construction • Width at fingerboard nut 1-5/8" • Ebony fingerboard with Pearl block inlays and corresponding shell side dots • Bound peghead and fingerboard • Pearl inlaid head veneer • Deluxe, gold-plated, individual machine heads with the exclusive Gibson "Crank"™ button • Gibson truss rod with distinctive truss rod cover • 22 frets • 23-1/2" scale length

BYRDLAND • Natural or Antique Sunburst finish

Complete with 603 Faultless plush lined case

SUPER 400C



BODY SPECIFICATIONS

Custom carved spruce top • Carved maple back • Solid maple matching rims • Graceful Venetian cutaway • Top and back bound in multiple black/white binding • Bound "f" holes • Adjustable ebony saddle with Pearl inlaid ebony bridge base contoured to outside top dimensions for maximum acoustical resonance • Gold-plated tailpiece • Deluxe bound pickguard • The new ultra-safe Gibson "Posi-Lok"™ strap button • Body size: Length 21-3/4", width 18", depth 3-1/4"

NECK SPECIFICATIONS

5-piece solid maple and mahogany construction • Width at fingerboard nut 1-11/16" • Ebony fingerboard with divided Pearl block inlays and corresponding shell side dots • Bound peg-head and fingerboard • Pearl inlaid head veneer • Deluxe, gold-plated, individual machine heads with the exclusive Gibson "Crank"™ button • Gibson truss rod with unique truss rod cover • 20 frets • 25-1/2" scale length

SUPER 400C • Antique Sunburst finish Complete with 400 Faultless plush lined case

L-5C



BODY SPECIFICATIONS

Custom carved spruce top • Carved maple back • Solid maple matching rims • Graceful Venetian cutaway • Top and back bound in multiple black/white binding • Bound "f" holes • Adjustable ebony saddle with ebony bridge base contoured to outside top dimensions for maximum acoustical resonance • Gold-plated tailpiece with contrasting engraved silver-plated centerpiece that reads "L-5" • Deluxe bound pickguard • The new ultra-safe Gibson "Posi-Lok"™ strap button • Body size: Length 21", width 17", depth 3-1/4"

NECK SPECIFICATIONS

5-piece solid maple and mahogany construction • Width at fingerboard nut 1-11/16" • Ebony fingerboard with Pearl block inlays and corresponding shell side dots • Bound peghead and fingerboard • Pearl inlaid head veneer • Deluxe, gold-plated, individual machine heads with the exclusive Gibson "Crank"™ button • Gibson truss rod with distinctive truss rod cover • 20 frets • 25-1/2" scale length

L-5C • Antique Sunburst finish
Complete with 600 Faultless plush lined case

HOWARD ROBERTS ARTIST



BODY SPECIFICATIONS

Arched, curly maple top • Matching curly maple rims • Arched curly maple back • Florentine single style cutaway • Oval soundhole with multiple purfling • Adjustable ebony saddle with Pearl inlaid ebony bridge base contoured to outside top dimensions for maximum acoustical resonance • Gold-plated bail tailpiece with Howard Roberts ebony wood centerpiece • Deluxe bound shell fingerrest • One gold-plated, floating "Super Humbucking" pickup mounted to end of fingerboard • Master volume, mid-range and treble roll-off controls • The new ultra-safe Gibson "Posi-Lok"™ strap button • Body size: Length 20-1/4", width 16-1/8", depth 3-3/8"

NECK SPECIFICATIONS

3-piece solid curly maple construction • Width at fingerboard nut 1-11/16" • Ebony fingerboard with beautiful Abalone inlays and corresponding shell side dots • Bound peghead and fingerboard • Abalone vine inlaid in head veneer • Gold-plated, individual sealed machine heads • Gibson truss rod with molded truss rod cover • 22 frets • 25-1/2" scale length

HOWARD ROBERTS ARTIST • Sunburst, Natural or Wine Red finish

HOWARD ROBERTS ARTIST DOUBLE PICKUP (Not Shown) • Sunburst, Natural, or Wine Red finish

515 Faultless plush lined case

HOWARD ROBERTS CUSTOM



BODY SPECIFICATIONS

Arched maple top • Matching maple rims • Arched maple back • Florentine single style cutaway • Oval soundhole with multiple purfling • Adjustable ebony saddle with Pearl inlaid ebony bridge base contoured to outside top dimensions for maximum acoustical resonance • Chrome-plated bail tailpiece with Howard Roberts rosewood centerpiece • Deluxe bound shell fingerrest • One chrome-plated floating "Super Humbucking" pickup mounted to end of fingerboard • Individual volume, mid-range and treble roll-off controls • The new ultra-safe Gibson "Posi-Lok"™ strap button • Body size: Length 20-1/4", width 16-1/4", depth 3-1/4"

NECK SPECIFICATIONS

3-piece solid maple construction • Width at fingerboard nut 1-11/16" • Rosewood fingerboard with distinctive Pearl inlays and corresponding shell side dots • Bound peghead and fingerboard • Abalone vine inlaid in head veneer • Chrome-plated, individual sealed machine heads • Gibson truss rod with molded truss rod cover • 22 frets • 25-1/2" scale length

HOWARD ROBERTS CUSTOM • Sunburst or Wine Red finish
515 Faultless plush lined case

HOWARD ROBERTS FUSION



BODY SPECIFICATIONS

Newly designed body shape with arched maple top • Arched maple back with matching hand bent maple rims • New single cutaway design • Top bound in multiple white and black binding • Newly designed f holes • Black fingerrest with white revealed edge • Adjustable chrome-plated Tune-O-Matic bridge with Gibson "Sustain Sisters" (5/8" brass studs mounted under bridge for added sustain) • An internal body design that offers the ultimate wood combination of spruce and maple • The new exclusive Gibson instant adjustment chrome-plated TP-6 fine tuning tailpiece • One Gibson Humbucking front pickup, one "Super Humbucking" back pickup • Individual tone and volume controls • 3-position toggle switch for pickup selection (individual or both pickups simultaneously) • Attractive, efficient, black speed knobs • The new ultra-safe Gibson "Posi-Lok"™ strap button • Body size: Length 18-1/8", width 14-7/8", depth 2-5/16"

NECK SPECIFICATIONS

3-piece solid maple construction • Width at fingerboard nut 1-11/16" • Ebony fingerboard with dot inlays and corresponding white side dots • Gibson truss rod with distinctive truss rod cover • 22 frets • 24-3/4" scale length

HOWARD ROBERTS FUSION • Antique Fireburst, Antique Sunburst or Ebony finish

HOWARD ROBERTS FUSION Faultless plush lined case

ES-175/CC



BODY SPECIFICATIONS

Arched maple top • Matching maple rims • Arched maple back • Florentine cutaway • Body binding on top and back • "f" soundhole design • Adjustable rosewood bridge saddle with rosewood bridge base contoured to outside top dimensions for maximum acoustical resonance • Chrome-plated bail tail-piece • Black fingerrest with white revealed edge • The historic, much in demand single coil, single bar Charlie Christian jazz pickup with individual volume and tone controls • The new ultra-safe Gibson "Posi-Lok"™ strap button • Body size: Length 20-1/4", width 16-1/4", depth 3-1/4"

NECK SPECIFICATIONS

3-piece solid maple construction • Width at fingerboard nut 1-11/16" • Bound rosewood fingerboard with unique position marker inlays and corresponding side dots • Inlaid head veneer • Chrome-plated, individual machine heads • Gibson truss rod with distinctive truss rod cover • 20 frets • 24-3/4" scale length

ES-175/CC • Antique Sunburst or Walnut finish

515 Faultless plush lined case

ES-175D



BODY SPECIFICATIONS

Arched maple top • Matching maple rims • Arched maple back • Florentine cutaway • Body binding on top and back • "f" soundhole design • Adjustable chrome-plated Tune-O-Matic bridge • Chrome-plated bail tailpiece • Black fingerrest with white revealed edge • Two powerful, chrome-plated, Gibson Humbucking pickups with individual volume and tone controls • 3-position toggle switch for pickup selection (individual or both pickups simultaneously) • The new ultra-safe Gibson "Posi-Lok"™ strap button • Body size: Length 20-1/4", width 16-1/4", depth 3-1/4"

NECK SPECIFICATIONS

3-piece solid maple construction • Width at fingerboard nut 1-11/16" • Rosewood fingerboard with unique position marker inlays and corresponding side dots • Inlaid head veneer • Chrome-plated individual machine heads • Gibson truss rod with distinctive truss rod cover • 20 frets • 24-3/4" scale length

ES-175D • Natural or Antique Sunburst finish

515 Faultless plush lined case

LES PAUL ARTIST



BODY SPECIFICATIONS

Solid mahogany body with 2 piece carved maple top • New design scarfed back • Single cutaway • Adjustable, gold-plated Tune-O-Matic bridge solidly mounted to two individual 5/8" brass studs ("Sustain Sisters") for added sustain • The new exclusive Gibson gold-plated instant adjustment fine tuning TP-6 tailpiece • Top bound with multiple black/white binding • Black pickguard with white revealed edge • New Gibson Active Electronics featuring expansion and compression circuitry, a bright mode, and 2 potted gold-plated Gibson Humbucking pickups • Three 2-position mini toggle switches for selection of the expansion, compression or bright mode • 3-position toggle switch for pickup selection (individual or both pickups simultaneously) • Master bass, master treble and master volume potentiometers • Attractive, efficient black speed knobs • The new ultra-safe Gibson "Posi-Lok"™ strap button • Body size: Length 17-3/8", width 12-31/32", depth 1-15/16"

NECK SPECIFICATIONS

5-piece solid maple and ebonized insert construction • Polished brass fingerboard nut • Width at fingerboard nut 1-11/16" • Ebony fingerboard with Pearl block inlay and corresponding shell side dots • Bound peghead and fingerboard • Newly designed Pearl and Abalone inlaid peghead • Deluxe individual gold-plated machineheads with the exclusive Gibson "Crank"™ button • Gibson truss rod with polished brass engraved truss rod cover • 22 frets • 24-3/4" scale length

LES PAUL ARTIST • Antique Fireburst, Antique Sunburst, or Ebony finish
535 Faultless plush lined case

LES PAUL ARTISAN



BODY SPECIFICATIONS

Solid mahogany body with carved maple top • Single cutaway • Adjustable gold-plated Tune-O-Matic bridge • The new exclusive Gibson gold-plated instant adjustment fine tuning TP-6 tailpiece • Black/white offset body binding • Black pickguard with white revealed edge • Two gold-plated Gibson Series VII Humbucking pickups with individual volume and tone controls • 3-position toggle switch for pickup selection (individual or both pickups simultaneously) • The new ultra-safe Gibson "Posi-Lok"™ strap button • Body size: Length 17-3/8", width 12-31/32", depth 1-15/16"

NECK SPECIFICATIONS

3-piece solid maple construction • Width at fingerboard nut 1-11/16" • Ebony fingerboard with ornate Hearts and Flowers Pearl inlays and corresponding side dots • Bound peghead and fingerboard • Unique pearl inlaid head veneer • Deluxe, gold-plated, individual machineheads with the exclusive Gibson "Crank"™ button • Gibson truss rod with distinctive truss rod cover • 22 frets • 24-3/4" scale length

LES PAUL ARTISAN • Walnut, Tobacco Sunburst, or Ebony finish
535 Faultless plush lined case

LES PAUL CUSTOM



BODY SPECIFICATIONS

Solid mahogany body with carved maple top • Single cutaway • Adjustable, gold-plated Tune-O-Matic bridge with adjustable, gold-plated stop-bar tailpiece • Black pickguard with white revealed edge • Two gold-plated, Gibson Humbucking pickups with individual volume and tone controls • 3-position toggle switch for pickup selection (individual or both pickups simultaneously) • The new ultra-safe Gibson "Posi-Lok"™ strap button • Body size: Length 17-3/8", width 12-31/32", depth 1-15/16"

NECK SPECIFICATIONS

3-piece solid maple construction • Width at fingerboard nut 1-11/16" • Ebony fingerboard with Pearl block inlays and corresponding side dots • Bound peghead and fingerboard • Pearl inlaid head veneer • Deluxe, gold-plated, individual machine heads with the exclusive Gibson "Crank"™ button • Gibson truss rod with distinctive truss rod cover • 22 frets • 24-3/4" scale length

LES PAUL CUSTOM • Ebony, White, Cherry Sunburst, Natural, Tobacco Sunburst, or Wine Red finish

LES PAUL CUSTOM/NICKEL PARTS (Not Shown) • Wine Red, Ebony, Cherry Sunburst, or Silverburst finish

LES PAUL CUSTOM/LEFT HAND (Not Shown) • Ebony, Wine Red, Tobacco Sunburst, or Cherry Sunburst finish.

535 Faultless plush lined case

LES PAUL PRO DELUXE



BODY SPECIFICATIONS

Solid mahogany body with carved maple top • Single cutaway • Cream colored body binding • Adjustable chrome-plated Tune-O-Matic bridge with adjustable, chrome-plated stop-bar tailpiece • Cream colored fingerrest • Two cream colored Gibson single coil pickups with individual volume and tone controls • 3-position toggle switch for pickup selection (individual or both pickups simultaneously) • The new ultra-safe Gibson "Posi-Lok"™ strap button • Body size: Length 17-3/8", width 12-31/32", depth 1-15/16"

NECK SPECIFICATIONS

3-piece solid maple construction • Width at fingerboard nut 1-11/16" • Ebony fingerboard with deluxe inlays and corresponding side dots • Cream colored fingerboard binding • Chrome-plated, individual machine heads • Gibson truss rod with distinctive truss rod cover • 22 frets • 24-3/4" scale length

LES PAUL PRO DELUXE • Ebony, Tobacco Sunburst, or Cherry Sunburst finish

535 Faultless plush lined case

LES PAUL STANDARD



BODY SPECIFICATIONS

Solid mahogany body with carved maple top • Single cutaway • Cream colored body binding • Adjustable chrome-plated Tune-O-Matic bridge with chrome-plated stop-bar tailpiece • Cream colored fingerrest • Two large chrome-plated Gibson Humbucking pickups with cream colored mounting rings • Individual volume and tone controls • 3-position toggle switch for pickup selection (individual or both pickups simultaneously) • The new ultra-safe Gibson "Posi-Lok"™ strap button • Body size: Length 17-3/8", width 12-31/32", depth 1-15/16"

NECK SPECIFICATIONS

3-piece solid maple construction • Width at fingerboard nut 1-11/16" • Rosewood fingerboard with deluxe inlays and corresponding side dots • Cream colored fingerboard binding • Chrome-plated individual machine heads • Gibson truss rod with distinctive truss rod cover • 22 frets • 24-3/4" scale length

LES PAUL STANDARD • Cherry Sunburst, Ebony, Natural, Wine Red or Tobacco Sunburst finish

535 Faultless plush lined case

LES PAUL DELUXE



BODY SPECIFICATIONS

Solid mahogany body with carved maple top • Single cutaway • Top bound with cream colored body binding • Adjustable, chrome-plated Tune-O-Matic bridge with chrome-plated stop-bar tailpiece • Cream colored fingerrest • Two chrome-plated Gibson Humbucking pickups with cream colored mounting rings • Individual volume and tone controls • 3-position toggle switch for pickup selection (individual or both pickups simultaneously) • The new ultra-safe Gibson "Posi-Lok"™ strap button • Body size: Length 17-3/8", width 12-31/32", depth 1-15/16"

NECK SPECIFICATIONS

3-piece solid maple construction • Width at fingerboard nut 1-11/16" • Rosewood fingerboard with deluxe inlays and corresponding side dots • Cream colored fingerboard binding • Chrome-plated, individual machine heads with shaped buttons • Gibson truss rod with distinctive truss rod cover • 22 frets • 24-3/4" scale length

LES PAUL DELUXE • Cherry Sunburst, Gold,* Ebony, Natural, Wine Red or Tobacco Sunburst finish

LES PAUL DELUXE/LEFT HAND (Not Shown) • Gold,* Wine Red, Tobacco Sunburst, or Cherry Sunburst finish.

535 Faultless plush lined case

*Gold finish top with Natural Mahogany finish rims and back.

FLYING V-II



BODY SPECIFICATIONS

5-piece laminated maple/walnut construction • Unique scarfed body design • Adjustable gold-plated Tune-O-Matic bridge solidly mounted to two individual 5/8" brass studs ("Sustain Sisters") for added sustain • Exquisite unique V shaped gold-plated tailpiece • Black revealed edge mini fingerrest • Two new Gibson specially designed Boomerang™ Humbucking pickups with one master tone and two volume controls • 3-position toggle switch for pickup selection (individual or both pickups simultaneously) • The new ultra-safe Gibson "Posi-Lok"™ strap button • Body size: Length 43-1/2," width 16-5/8," depth 1-9/16"

NECK SPECIFICATIONS

5-piece solid walnut/maple construction • Polished brass fingerboard nut • Width at fingerboard nut 1-11/16" • Ebony fingerboard with dot Pearl inlays and corresponding side dots • Solid black head veneer • Deluxe individual gold-plated machineheads with the exclusive Gibson "Crank"™ button • Gibson truss rod with uniquely shaped truss rod cover • 22 frets • 24-3/4" scale length

FLYING V-II • Walnut top • High Gloss Natural finish

FLYING V-II • Maple top • High Gloss Natural finish

FLYING V-II • Faultless plush lined case

L-5S



BODY SPECIFICATIONS

Carved curly maple body • Single cut-away design • Body bound in multiple black/white binding • Adjustable, gold-plated, wide travel Tune-O-Matic bridge • The new exclusive, Gibson instant adjustment fine tuning gold-plated TP-6 tailpiece • Two gold-plated, Gibson "Super Humbucking" pickups with individual volume and tone controls • 3-position toggle switch for pickup selection (individual or both pickups simultaneously) • The new ultra-safe Gibson "Posi-Lok"™ strap button • Body size: Length 16-1/4", width 13-1/2", depth 1"

NECK SPECIFICATIONS

5-piece curly solid maple and mahogany construction • Width at fingerboard nut 1-11/16" • Ebony fingerboard with deluxe Abalone block inlays • Bound peghead and fingerboard with shell fingerboard side dots • Abalone inlaid head veneer • Deluxe, gold-plated, individual machine heads with the exclusive Gibson "Crank"™ button • Gibson truss rod with distinctive truss rod cover • 22 frets • 24-3/4" scale length

L-5S • Cherry Sunburst, Fireburst, Natural, or Antique Sunburst finish
666 Faultless plush lined case

EXPLORER II



BODY SPECIFICATIONS

Sculptured walnut/maple body construction • Unique cutaway design • Adjustable gold-plated Tune-O-Matic bridge • The new exclusive Gibson instant adjustment fine tuning gold-plated TP-6 tailpiece • Two high output Gibson "Dirty Fingers" Humbucking pickups with exposed coils • Two volume controls, one master tone control • 3-position toggle switch for pickup selection (individual or both pickups simultaneously) • Attractive, efficient, black speed knobs • The new ultra-safe Gibson "Posi-Lok"™ strap button • Body size: Length 21-15/16", width 16-5/16", depth 1-9/16"

NECK SPECIFICATIONS

5-piece curly solid maple and mahogany construction • Width at fingerboard nut 1-11/16" • Ebony fingerboard with dot inlays and corresponding side dots • Deluxe gold-plated individual mini-machineheads • Gibson truss rod with new design truss rod cover • 22 frets • 24-3/4" scale length

EXPLORER II • Walnut top • High Gloss Natural finish

EXPLORER II • Maple top • High Gloss Natural finish

EXPLORER II • Faultless plush lined case

335-S DELUXE



BODY SPECIFICATIONS

Sculptured solid mahogany body construction • Unique double cutaway design offers easy access to higher playing positions • Adjustable chrome-plated Tune-O-Matic bridge • The new exclusive Gibson instant adjustment chrome-plated TP-6 fine tuning tail-piece • New design fingerrest with white revealed edge • Two high output Gibson "Dirty Fingers" Humbucking exposed pickups that feature one cream and one black coil • Individual volume and tone controls • 3-position toggle switch for pickup selection (individual or both pickups simultaneously) • Coil tap switch to place either humbucking pickup into a single point non-humbucking mode • Attractive, efficient black speed knobs • The new ultra-safe Gibson "Posi-Lok"™ strap button • Body size: Length 17-1/8" width 13-7/8" depth 1-1/2"

NECK SPECIFICATIONS

3-piece solid mahogany construction • Polished brass fingerboard nut • Width at fingerboard nut 1-11/16" • Bound Ebony fingerboard with dot inlays and corresponding side dots • Attractive Pearl inlaid Gibson peghead • Chrome-plated individual deluxe machine heads • Gibson truss rod with distinctive truss rod cover • 22 frets • 24-3/4" scale length

335-S DELUXE • Tobacco Sunburst, Silverburst or Cherry finish
540 Faultless plush lined case

SG STANDARD



BODY SPECIFICATIONS

Contoured solid mahogany construction • Double cutaway design • Adjustable, chrome-plated Tune-O-Matic bridge with chrome-plated stopbar tailpiece • Black fingerrest with white revealed edge • Two chrome-plated Gibson "Super Humbucking" pickups with individual volume and tone controls • 3-position toggle switch for pickup selection (individual or both pickups simultaneously) • The new ultra-safe Gibson "Posi-Lok"™ strap button • Body size: Length 16", width 13-5/32", depth 1-5/16"

NECK SPECIFICATIONS

3-piece solid mahogany construction • Width at fingerboard nut 1-11/16" • Bound rosewood fingerboard with Pearl block inlays and corresponding side dots • Pearl inlaid head veneer • Chrome-plated individual machine heads • Gibson truss rod with distinctive truss rod cover • 22 frets • 24-3/4" scale length

SG STANDARD • Walnut, Cherry, Tobacco Sunburst or White finish
437 Faultless plush lined case

EDS-1275



BODY SPECIFICATIONS

Solid mahogany body • Double cutaway for added playing ease • Adjustable chrome-plated Tune-O-Matic bridge with chrome-plated tailpiece • Black pickguards with white revealed edges • Two sets of adjustable chrome-plated Gibson Humbucking pickups (each neck has its own master volume and tone controls) • 3-position toggle switch for six-string and/or twelve-string selection • 3-position toggle switch for pickup selection (individual or both pickups simultaneously) • The new ultra-safe Gibson "Posi-Lok"™ strap button • Body size: Length 17-3/4," width 16-1/4," depth 1-5/16"

NECK SPECIFICATIONS

Two necks of 3-piece solid maple construction • Width at fingerboard nuts 1-11/16" • Bound rosewood fingerboards with deluxe inlays and corresponding side dots • Deluxe fine tuning machine heads • Gibson truss rod with molded truss rod cover • 20 frets • 24-3/4" scale length

EDS-1275 • Walnut finish

Complete with Faultless plush lined case

RD ARTIST/79



BODY SPECIFICATIONS

Contoured, balanced solid maple body

- Unique cutaway design
- Adjustable, gold-plated Tune-O-Matic bridge
- The new, exclusive Gibson instant adjustment, fine tuning, gold-plated TP-6 tail-piece
- Black fingerrest with white revealed edge
- New Gibson Active Electronics featuring expansion and compression circuitry, a bright mode, and gold-plated Series VI Gibson Humbucking pickups
- Two mini-toggle switches for selection of the expansion/compression or bright mode
- 3-position toggle switch for pickup selection (individually or both pickups simultaneously)
- Master bass, master treble and two volume potentiometers which act as expansion or compression intensifiers (front pickup compression—back pickup expansion)
- Attractive, efficient black speed knobs
- The new ultra-safe Gibson "Posi-Lok"™ strap button

Body size: Length 19-9/16", width 14-5/8", depth 1-3/8"

NECK SPECIFICATIONS

- 3-piece solid maple construction
- Width at fingerboard nut 1-11/16"
- Bound ebony fingerboard with ornate Pearl block inlays and corresponding shell side dots
- Bound peghead and unique Pearl inlaid veneer
- Deluxe, gold-plated machineheads with the exclusive Gibson "Crank"™ button
- Gibson truss rod with distinctive truss rod cover
- 22 frets
- 24-3/4" scale length

RD ARTIST/79 • Antique Sunburst, Ebony, or Natural finish

RD ARTIST/77 (Not Shown) (25½" scale length) • Antique Sunburst, Ebony, or Natural finish.

550 Faultless plush lined case

RD ARTIST BASS



BODY SPECIFICATIONS

Contoured, balanced solid maple body • Unique cutaway design • 3-point adjustable Tune-O-Matic bridge with chrome-plated dual purpose tailpiece (strings enter through body or connect at end of bridge) • Black fingerrest with white revealed edge • New Gibson Active Electronics featuring expansion and compression circuitry, a bright mode, and two specially designed Series V active Gibson Humbucking pickups • Two mini-toggle switches for selection of expansion/compression or bright mode • 3-position toggle switch for pickup selection (individual or both pickups simultaneously) • One bass, one treble and two volume potentiometers which act as expansion or compression intensifiers (front pickup compression/back pickup expansion) • Attractive, efficient black speed knobs • The new ultra-safe Gibson "Posi-Lok"™ strap button • Body size: Length 19-9/16", width 14-5/8", depth 1-5/8"

NECK SPECIFICATIONS

3-piece solid maple construction • Width at fingerboard nut 1-5/8" • Ebony or maple fingerboard (depending on finish choice) Pearl dot inlays and corresponding white side dots • Unique Pearl inlaid head veneer • Deluxe, chrome-plated machineheads • Gibson truss rod with distinctive truss rod cover • 20 frets • 34-3/8" scale length

RD ARTIST BASS • Antique Sunburst, Ebony, or Natural (Maple fingerboard) finish

560 Faultless plush lined case

ES ARTIST



BODY SPECIFICATIONS

Highly figured arched maple top • Highly figured arched maple back with matching maple rims • Double Venetian cutaway offers easy access to higher playing positions • Top and back bound in multiple black/white binding • New Gibson no "f" hole design • Adjustable gold-plated Tune-O-Matic bridge solidly mounted to two individual 5/8" brass studs ("Sustain Sisters") for added sustain • Full maple center block for additional sustain and brilliant high frequency response • The new exclusive Gibson instant adjustment gold-plated TP-6 fine tuning tailpiece • Tortoise shell fingerrest with white revealed edge • New Gibson Active Electronics featuring expansion and compression circuitry, a bright mode, and two potted gold-plated Gibson Humbucking pickups • Three 2-position mini toggle switches for selection of the expansion, compression or bright mode • 3-position toggle switch for pickup selection (individual or both pickups simultaneously) • Master bass, master treble and master volume potentiometer • Attractive, efficient black speed knobs • The new ultra-safe Gibson "Posi-Lok"™ strap button • Body size: Length 18-5/16", width 16", depth 1-3/4"

NECK SPECIFICATIONS

5-piece solid maple construction • Polished brass fingerboard nut • Width at fingerboard nut 1-11/16" • Ebony fingerboard with offset Pearl dot style inlays • Shell side dots • Bound peghead and fingerboard • Attractive inlaid peghead • Deluxe, individual gold-plated machineheads with the exclusive Gibson "Crank"™ button • Gibson truss rod with polished brass engraved truss rod cover • 22 frets • 24-3/4" scale length

ES ARTIST • Cherry Sunburst, Ebony, or Antique Fireburst finish

519 Faultless plush lined case

ES-355TDSV



BODY SPECIFICATIONS

Arched maple top • Arched maple back with matching maple rims • Double Venetian cutaway offers easy access to higher playing positions • Top and back bound in multiple black/white binding • Bound "f" holes • Adjustable gold-plated Tune-O-Matic bridge • The new exclusive, Gibson instant adjustment fine tuning gold-plated TP-6 tailpiece • Deluxe bound fingerrest • Two gold-plated Gibson Humbucking pickups with individual volume and tone controls • 3-position toggle switch for pickup selection (individual or both pickups simultaneously) • Stereo electronics with single stereo output jack • 6-position Vari-Tone control for additional tonal capabilities • The new ultra-safe Gibson "Posi-Lok"™ strap button • Body size: Length 18-5/16", width 16", depth 1-3/4"

NECK SPECIFICATIONS

3-piece solid maple construction • Width at fingerboard nut 1-11/16" • Ebony fingerboard with Pearl block inlays and corresponding side dots • Bound peghead and fingerboard • Pearl inlaid head veneer • Deluxe gold-plated machine heads with the exclusive Gibson "Crank"™ button • Gibson truss rod with distinctive truss rod cover • 22 frets • 24-3/4" scale length

ES-355TDSV • Wine Red, Walnut or Antique Sunburst finish

ES-355TDS/79 (Not Shown) • With stereo or monaural circuitry and dual output jacks

519 Faultless lined case

ES-347TD



BODY SPECIFICATIONS

Arched maple top • Arched maple back with matching maple rims • Double Venetian cutaway offers easy access to higher playing positions • Top and back bound in multiple black/white binding • Adjustable gold-plated Tune-O-Matic bridge solidly mounted to two individual 5/8" brass studs ("Sustain Sisters") for added sustain • Full maple center block for additional sustain and brilliant high frequency response • The new exclusive Gibson instant adjustment, gold-plated TP-6 fine tuning tailpiece • Two gold-plated Gibson Series VII high output "Super Humbucking" pickups with individual volume and tone controls • 3-position toggle switch for pickup selection (individual or both pickups simultaneously) • Coil tap switch to place either humbucking pickup into a single point non-humbucking mode • Black speed knobs • The new ultra-safe Gibson "Posi-Lok"™ strap button • Body size: Length 18-5/16", width 16", depth 1-3/4"

NECK SPECIFICATIONS

3-piece solid maple construction • Polished brass fingerboard nut • Width at fingerboard nut 1-11/16" • Ebony fingerboard with Pearl block inlays and corresponding side dots • Bound peghead and fingerboard • Attractive inlaid peghead • Deluxe, gold-plated machine heads • Gibson truss rod with distinctive truss rod cover • 22 frets • 24-3/4" scale length

ES-347TD • Ebony, Natural, or Antique Sunburst finish

519 Faultless plush lined case

ES-345TDSV



BODY SPECIFICATIONS

Arched maple top • Arched maple back with matching maple rims • Double Venetian cutaway offers easy access to higher playing positions • Top and back bound in multiple black/white binding • Adjustable, gold-plated Tune-O-Matic bridge • Gold-plated bail tailpiece • Black fingerrest with white revealed edge • Two gold-plated Gibson Humbucking pickups with individual volume and tone controls • 3-position toggle switch for pickup selection (individual or both pickups simultaneously) • Stereo electronics • 6-position Vari-Tone control for additional tonal capabilities • The new ultra-safe Gibson "Posi-Lok"™ strap button • Body size: Length 18-5/16," width 16," depth 1-3/4"

NECK SPECIFICATIONS

3-piece solid maple construction • Width at fingerboard nut 1-11/16" • Bound rosewood fingerboard with divided block inlays and corresponding shell side dots • Pearl inlaid head veneer • Deluxe, gold-plated machine heads • Gibson truss rod with distinctive truss rod cover • 22 frets • 24-3/4" scale length

ES-345TDSV • Sunburst, Wine Red, or Walnut finish

519 Faultless plush lined case

ES-335PRO



BODY SPECIFICATIONS

Arched maple top • Arched maple back with matching maple rims • Double Venetian cutaway offers easy access to higher playing positions • Top and back bound in white binding • Adjustable chrome-plated Tune-O-Matic bridge • Full maple center block for additional sustain and brilliant high frequency response • Chrome-plated stop-bar tail-piece • Black fingerrest with white revealed edge • Two high output Gibson "Dirty Fingers" Humbucking pickups with exposed coils • Individual tone and volume controls • 3-position toggle switch for pickup selection (individual or both pickups simultaneously) • Attractive, efficient, black speed knobs • The new ultra-safe Gibson "Posi-Lok"™ strap button • Body size: Length 18-5/16", width 16", depth 1-3/4"

NECK SPECIFICATIONS

3-piece solid maple construction • Width-at fingerboard nut 1-11/16" • Bound rosewood fingerboard with dot inlays and corresponding side dots • Pearl inlaid head veneer • Deluxe chrome-plated individual machine heads • Gibson truss rod with distinctive truss rod cover • 22 frets • 24-3/4" scale length

ES-335PRO • Antique Sunburst or Cherry Red finish

519 Faultless plush lined case

ES-335TD



BODY SPECIFICATIONS

Arched maple top • Arched maple back with matching maple rims • Double Venetian cutaway offers easy access to higher playing positions • Top and back bound in multiple black/white binding • Adjustable, chrome-plated Tune-O-Matic bridge • Chrome-plated bail tailpiece • Black fingerrest with white revealed edge • Two chrome-plated "Super Humbucking" pickups with individual volume controls • 3-position toggle switch for pickup selection (individual or both pickups simultaneously) • Coil tap switch to place either humbucking pickup into a single point non-humbucking mode • The new ultra-safe Gibson "Posi-Lok"™ strap button • Body size: Length 18-15/16", width 16", depth 1-3/4"

NECK SPECIFICATIONS

3-piece solid maple construction • Width at fingerboard nut 1-11/16" • Bound rosewood fingerboard with block inlays and corresponding side dots • Pearl inlaid head veneer • Chrome-plated, individual machine heads • Gibson truss rod with distinctive truss rod cover • 22 frets • 24-3/4" scale length

ES-335TD • Wine Red, Sunburst, or Walnut finish

ES335TD/LEFT HAND (Not Shown) • Wine Red, Sunburst, or Walnut finish. 519 Faultless plush lined case

"RIPPER" L-9S



BODY SPECIFICATIONS

Solid maple body with contoured shape
• Double cutaway design • 3-point adjustable Tune-O-Matic bridge with chrome-plated handrest • Combination tailpiece (strings enter through body or connect at end of bridge) • Two Gibson "Super Humbucking" pickups • Master volume, mid-range and treble roll-off controls • 4-position transfer switch for multiple tonal changes • The new ultra-safe Gibson "Posi-Lok"™ strap button • Body size: Length 21-1/2," width 14-1/2," depth 1-5/16"

NECK SPECIFICATIONS

3-piece solid maple construction • Width at fingerboard nut 1-5/8" • Maple or Ebony fingerboard with dot inlays and corresponding side dots • Chrome-plated individual machine heads • Gibson truss rod with distinctive truss rod cover • 20 frets • 34-3/8" scale length

"RIPPER" L-9S • Natural finish with Maple fingerboard, or Ebony finish with Ebony fingerboard

511 Faultless plush lined case

G-3



BODY SPECIFICATIONS

Solid maple body with contoured shape

- Double cutaway design
- Special design bridge adjusts height and intonation of each string
- Chrome-plated handrest
- Three new design pickups wired in humbucking configuration
- Black fingerrest with white revealed edge
- Toggle switch activates pickups A & B, ABC or BC (each pickup is 3 point adjustable for additional tonal effects)
- Strings enter through back of body
- The new ultra-safe Gibson "Posi-Lok"™ strap button

Body size: Length 21-1/2", width 14-1/2", depth 1-5/16"

NECK SPECIFICATIONS

One piece solid maple construction

- Width at fingerboard nut 1-5/8"
- Maple fingerboard with dot inlays and corresponding side dots
- Chrome-plated individual machine heads
- Gibson truss rod with distinctive truss rod cover
- 20 frets
- 34-3/8" scale length

G-3 • Natural Satin, Ebony or Antique Sunburst finish

777 Faultless plush lined case

GRABBER



BODY SPECIFICATIONS

Solid maple body with contoured shape
• Double cutaway design • Special design bridge adjusts the height and intonation of each string • Chrome-plated handrest • Black fingerrest • Special design pickup mounted on internal slide • Pickup placement can be changed for additional tonal effects • Master volume and controls • The new ultra-safe Gibson "Posi-Lok"™ strap button • Body size: Length 21-1/2," width 14-1/2," depth 1-5/16"

NECK SPECIFICATIONS

One piece solid maple construction • Width at fingerboard nut 1-5/8" • Maple fingerboard with dot inlays and corresponding side dots • Chrome-plated, individual machine heads • Gibson truss rod with distinctive truss rod cover • 20 frets • 34-3/8" scale length

GRABBER • Natural Satin or Ebony finish

777 Faultless plush lined case

F-5L



FEATURES

- Select, vertical grained tap-tuned spruce top • Tap tuned curly maple back with matching curly maple rims • Hand carved scroll • Artist body design with ivoroid binding • Traditional artist shape peghead • Multiple bound head veneer inlaid with Abalone in a "fern" design, and inlaid "The Gibson" in Mother-of-Pearl • Ebony fingerboard with dot Pearl inlay patterns • Mother-of-Pearl fingerboard nut • Original style gold-plated tuning machines with Mother-of-Pearl buttons • Original design multiple bound fingerrest • Ebony bridge with "offset" style saddle • Gold-plated, engraved tailpiece • Ebony end pin with Mother-of-Pearl dot inlay • Hand shaded Antique Sunburst finish • Original style patent and signature labels signed by the luthier • 29 traditional size nickel-silver frets • 13-7/8" scale length • Body size: Length 13-3/4", width 10", depth 1-3/4"
- F-5L** • Antique Sunburst finish
Complete with original style plush lined hard shell case

ALL AMERICAN



FEATURES

- Laminated curly maple neck
- Adjustable Gibson truss rod
- American Eagle design peghead
- Instrument completely hand-carved and buffed
- Owner's name inscribed on Pearl truss rod cover
- Deluxe sealed machine heads with Pearl buttons
- Progress of American history outlined on fingerboard
- All parts gold-plated and ornately engraved
- Gold-plated "Bell Brass" tone ring
- Gold-plated armrest
- 22 Traditional Mastertone fine wire nickel-silver frets
- Weather resistant head
- Gibson maple bridge with ebony insert
- 24 gold-plated tension brackets
- Two coordinator rods
- Four mounting lugs for easy re-assembly
- Inside of resonator inlaid with intricate marquetry patterns that are finished and buffed to a high gloss
- Tension tailpiece
- Width at fingerboard nut 1-3/16" (5-string)
- 11" rim
- 13-1/4" resonator
- 26-1/4" scale length

ALL AMERICAN 5-STRING BANJO

ALL AMERICAN TENOR BANJO

Complete with Deluxe Faultless plush lined hard shell case and zipper case cover



FLORENTINE



FEATURES

- Laminated curly maple neck • Adjustable Gibson truss rod • Peghead decoratively inlaid with colorful rhinestones • Instrument completely hand carved, finished and buffed to a high-gloss • Owner's name inscribed on Pearl truss rod cover • Deluxe sealed machine heads with pearl buttons • Colorful scenes of Florence, Italy outlined on fingerboard • All metal parts heavily gold-plated and ornately engraved • Gold-plated "Bell Brass" tone ring • Gold-plated armrest • 19 traditional Mastertone fine wire frets • Weather resistant head • Gibson maple bridge with ebony insert • 24 tension brackets • Two coordinator rods • Four mounting lugs for easy re-assembly • Inside of resonator inlaid with intricate marquetry patterns that are finished and buffed to a high-gloss • Tension tail-piece • Width at fingerboard nut 1-3/16" (tenor) • 11" rim • 13-3/4" resonator • 23" scale length

FLORENTINE TENOR BANJO

FLORENTINE 5-STRING BANJO

Complete with Deluxe Faultless plush lined hard shell case and zipper case cover



800 SERIES



FEATURES

- Laminated curly maple neck • Master-tone violin-shaped peghead with "Mother-of-Pearl" inlay • Ebony fingerboard with ornate wreath inlay pattern
- Multiple binding on both resonator and fingerboard • 11-ply 3/4" maple rim for greater strength and tonal projection • Maple resonator • Adjustable truss rod • 22 traditional Master-tone fine wire frets • "Bell Brass" tone ring • Heavy duty brass tension brackets • Brass stretcher band • Double style brass flange • 4 brass mounting lugs for easy re-assembly • One piece solid brass armrest • Original "Eagle Claw" Master-tone tailpiece • Two coordinator rods • Weather resistant head • Maple bridge with ebony insert • Geared fifth string peg (RB-800) • Original Mastertone design machine heads • Available in Cherry Sunburst finish • Gold-plated parts • 11" rim • 13-3/4" resonator • Width at fingerboard nut 1-3/16" (RB-800) • 26-1/4" scale length

Optional Fingerboard Inlays:

- Flying Eagle
- Hearts and Flowers

Optional Finishes:

- Gibson Sunburst
- Argentine Gray
- Natural
- Antique Sunburst
- Viceroy Brown with Natural Sunburst

RB-800 5 STRING BANJO

Complete with 623 Faultless plush lined case

TB-800 TENOR BANJO

Complete with 509 Faultless plush lined case

PB-800 PLECTRUM BANJO

Complete with 623 Faultless plush lined case

250 SERIES



FEATURES

- Laminated mahogany neck • Traditional Mastertone violin-shaped peg-head with "Mother-of-Pearl" inlay • Ivoroid binding on both resonator and fingerboard • 11-ply 3/4" maple rim for greater strength and tonal projection • Mahogany resonator • Adjustable truss rod • 22 traditional Mastertone fine wire frets • "Bell Brass" tone ring • Heavy duty brass tension brackets • Brass stretcher band • Double style brass flange • Four brass mounting lugs for easy re-assembly • One piece solid armrest • Original "Eagle Claw" Mastertone tailpiece • Two coordinator rods • Weather resistant head • Maple bridge with ebony insert • Geared fifth string peg (RB-250) • Original Mastertone design machine heads • Nickel plated parts • Width at fingerboard nut 1-3/16" (RB-250) • 11" rim • 13-3/4" resonator • 26-1/4" scale length.

RB-250 5-STRING BANJO • Walnut finish

TB-250 TENOR BANJO • Walnut finish

623 Faultless Plush lined case

J-200



BODY SPECIFICATIONS

- Select fine grain spruce top • Book-matched maple back and rims • Sculptured, inlaid rosewood bridge with rosewood/pearl dot pins • Top and back bound in multiple black/white body binding • Ornate multiple purfling ring around sound hole • New ultra-safe Gibson "Posi-Lok"™ strap button • Body size: Length 21," width 17," depth 4-7/8"

NECK SPECIFICATIONS

- 3-piece solid maple construction • Width at fingerboard nut 1-11/16" • Rosewood fingerboard with crown-type block Pearl inlays and corresponding side dots • Bound peghead and fingerboard • Pearl inlaid head veneer • Deluxe, gold-plated, individual machine heads • Gibson truss rod with distinctive truss rod cover • 20 frets • 25-1/2" scale length

J-200 • Natural or Antique Sunburst finish

600 Faultless plush lined case

DOVE



BODY SPECIFICATIONS

- Select fine grain spruce top
- Book-matched maple back and rims
- Sculptured ebony bridge with Dove Pearl inlays
- Top inscribed and inlaid Dove fingerrest
- Ornate multiple purfling ring around sound hole
- New ultra-safe Gibson "Posi-Lok"™ strap button

Body size: Length 20-1/4," width 16-1/4," depth 4-7/8"

NECK SPECIFICATIONS

- 3-piece solid maple construction
- Width at fingerboard nut 1-11/16"
- Ebony fingerboard with split Pearl block inlays and corresponding side dots
- Pearl inlaid head veneer
- Deluxe chrome-plated, individual machine heads
- Gibson truss rod with distinctive truss rod cover
- 20 frets
- 25-1/2" scale length

DOVE • Natural, Ebony, Antique Sunburst, or Antique Cherry Sunburst finish
515 Faultless plush-lined case

HERITAGE



BODY SPECIFICATIONS

- Select fine grain spruce top • Book-matched rosewood back and rims • Sculptured ebony bridge with Pearl inlays • Body binding on top and back • Multiple purfling ring around sound hole • Black teardrop fingerrest • New, ultra-safe Gibson "Posi-Lok"™ strap button • Body size: Length 20-1/4", width 16-1/4", depth 4-7/8"

NECK SPECIFICATIONS

- 3 piece solid maple construction • Width at fingerboard nut 1-11/16" • Ebony fingerboard with Pearl block inlays • Pearl inlaid head veneer • Deluxe chrome-plated individual machine heads • Gibson truss rod with distinctive truss rod cover • 20 frets • 25-1/2" scale length

HERITAGE • Natural finish top with rosewood rims and back
515 Faultless plush lined case

HUMMINGBIRD



BODY SPECIFICATIONS

- Close grain spruce top • Book-matched mahogany back and rims • Sculptured rosewood bridge • Top and back bound in multiple black/white binding • Beautifully inscribed Hummingbird fingerrest • Ornate multiple purfling ring around sound hole • New ultra-safe Gibson "Posi-Lok"™ strap button • Body size: Length 20-1/4" width 16-1/4" depth 4-7/8"

NECK SPECIFICATIONS

- 3 piece solid maple construction • Width at fingerboard nut 1-11/16" • Rosewood fingerboard with Pearl block inlays and corresponding side dots • Pearl inlaid head veneer • Deluxe, chrome-plated, individual machine heads • Gibson truss rod with distinctive truss rod cover • 20 frets • 25-1/2" scale length

HUMMINGBIRD • Natural finish top with mahogany rims and back, or Antique Cherry Sunburst finish
515 Faultless plush lined case

J-55



BODY SPECIFICATIONS

- Select fine grain spruce top • Arched laminated mahogany back with mahogany rims • Rosewood bridge • Body binding on top and back • Multiple purfling around sound hole • Attractive shell fingerrest • New ultra-safe Gibson "Posi-Lok"™ strap button • Body size: Length 20-1/4" width 16-1/4" depth 4-7/8"

NECK SPECIFICATIONS

- 3-piece solid maple construction • Width at fingerboard nut 1-11/16" • Rosewood fingerboard with dot inlays and corresponding side dots • Chrome-plated individual machine heads • Gibson truss rod with distinctive truss rod cover • 20 frets • 25-1/2" scale length

J-55 • Natural finish top with mahogany rims and back

515 Faultless plush lined case

J-50



BODY SPECIFICATIONS

- Close grain spruce top • Bookmatched mahogany back and rims • Rosewood bridge • Body binding on top and back • Attractive shell fingerrest • Multiple purfling ring around sound hole • New, ultra-safe Gibson "Posi-Lok"™ strap button • Body size: Length 20-1/4", width 16-1/4", depth 4-7/8"

NECK SPECIFICATIONS

- 3-piece solid maple construction • Width at fingerboard nut 1-11/16" • Rosewood fingerboard with dot inlays and corresponding side dots • Individual machine heads, Gibson truss rod with distinctive truss rod cover • 20 frets • 25-1/2" scale length

J-50 • Natural finish top with mahogany rims and back
515 Faultless plush lined case

J-45



BODY SPECIFICATIONS

- Close grain spruce top • Book-matched mahogany back and rims • Rosewood bridge • Body binding on top and back • Attractive shell fingerrest • Multiple purfling ring around sound hole • New, ultra-safe Gibson "Posi-Lok"™ strap button • Body size: Length 20-1/4", width 16-1/4", depth 4-7/8"

NECK SPECIFICATIONS

- 3-piece solid maple construction • Width at fingerboard nut 1-11/16" • Rosewood fingerboard with dot inlays and corresponding side dots • Individual chrome-plated machine heads • Gibson truss rod with distinctive truss rod cover • 20 frets • 25-1/2" scale length
- J-45** • Antique Sunburst finish
515 Faultless plush lined case

J-40



BODY SPECIFICATIONS

- Close grain spruce top • Bookmatched mahogany back and rims • Rosewood bridge • Shell body binding top and back • Attractive shell fingerrest • Multiple purfling ring around sound hole • New, ultra-safe Gibson "Posi-Lok"™ strap button • Body size: Length 20-1/4", width 16-1/4", depth 4-7/8"

NECK SPECIFICATIONS

- 3-piece solid maple construction • Width at fingerboard nut 1-11/16" • Rosewood fingerboard with dot inlays and corresponding side dots • Individual chrome-plated machine heads • Gibson truss rod with distinctive truss rod cover • 20 frets • 25-1/2" scale length

J-40 • Available in Natural finish top with mahogany rims and back, or Walnut finish

515 Faultless plush lined case

THE "PAUL" (STANDARD)



BODY SPECIFICATIONS

- Sculptured solid walnut construction
- Single cutaway
- Adjustable chrome-plated Tune-O-Matic bridge with chrome-plated stop-bar tailpiece
- Two powerful, adjustable, Gibson Humbucking pickups with exposed coils
- Black mounting rings that highly complement the contrasting chrome hardware
- Individual volume and tone controls for each pickup
- Black speed knobs
- 3-position toggle switch for pickup selection (individual or both pickups simultaneously)
- Body size: Length 17-3/8", width 12-31/32", depth 1-3/4"

NECK SPECIFICATIONS

- 3-piece solid walnut construction
- Width at fingerboard nut 1-11/16"
- Ebony fingerboard with Pearl dot inlays and corresponding side dots
- The unique Gibson branded peghead
- Individually enclosed chrome-plated machine heads
- Gibson truss rod with distinctive truss rod cover
- 22 frets
- 24-3/4" scale length

THE "PAUL" (STANDARD) • Natural Walnut finish

535 Faultless plush lined case

THE "SG" (STANDARD)



BODY SPECIFICATIONS

Contoured solid walnut construction • Double cutaway design • Chrome-plated adjustable Tune-O-Matic bridge with chrome-plated stop-bar tailpiece • Uniquely shaped fingerrest with white revealed edge • One exposed front Humbucking pickup coupled to an all new exposed super hot specially wound rear "Velvet Brick"™ "Super Humbucking" pickup that features one cream and one black coil • Individual tone and volume controls • 3-position toggle switch for pickup selection (individual or both pickups simultaneously) • Attractive, efficient, black speed knobs • Body size: Length 16", width 12-3/4", depth 1-5/16"

NECK SPECIFICATIONS

3-piece solid walnut construction • Width at fingerboard nut 1-11/16" • Ebony fingerboard with dot inlays and corresponding side dots • The unique Gibson branded peghead • Deluxe chrome-plated individual machine heads • Gibson truss rod with distinctive truss rod cover • 22 frets • 24-3/4" scale length

THE "SG" (STANDARD) • Natural Walnut Finish
437 Faultless plush lined case

335-S CUSTOM



BODY SPECIFICATIONS

Sculptured solid mahogany constructions • Unique double cutaway design offers easy access to higher playing positions • Adjustable chrome-plated Tune-O-Matic bridge • The new exclusive Gibson instant adjustment chrome-plated TP-6 fine tuning tailpiece • New design fingerrest with white revealed edge • Two high output Gibson "Dirty Fingers" Humbucking exposed pickups that feature one cream and one black coil • Individual volume and tone controls • 3-position toggle switch for pickup selection (individual or both pickups simultaneously) • Coil tap switch to place either humbucking pickup into a single point non-humbucking mode • Attractive, efficient black speed knobs • Body size: Length 17-1/8," width 13-7/8," depth 1-1/2"

NECK SPECIFICATIONS

3-piece solid mahogany construction • Width at fingerboard nut 1-11/16" • Rosewood fingerboard with dot inlays and corresponding side dots • The new exclusive Gibson branded peghead • Chrome-plated individual deluxe machine heads • Gibson truss rod with distinctive truss rod cover • 22 frets • 24-3/4" scale length

335-S CUSTOM • Natural Mahogany finish

540 Faultless plush lined case

THE "PAUL" (DELUXE)



BODY SPECIFICATIONS

Sculptured solid mahogany design • Single cutaway • Adjustable chrome-plated Tune-O-Matic bridge with stop-bar tailpiece • Two powerful adjustable Gibson Humbucking pickups with exposed coils • Individual volume and tone controls for each pickup • Attractive, efficient black speed knobs • 3-position toggle switch for pickup selection (individual or both pickups simultaneously) • Body size: Length 17-3/8", width 12-3/4", depth 1-3/4"

NECK SPECIFICATIONS

3-piece solid mahogany construction • Width at fingerboard nut 1-11/16" • Exclusive Gibson branded peghead • Ebony fingerboard with Pearl dot inlays and corresponding side dots • Individually enclosed chrome-plated machine heads • Gibson truss rod with distinctive truss rod cover • 22 frets • 24-3/4" scale length

THE "PAUL" (DELUXE) • Natural Mahogany or Antique Mahogany finish
535 Faultless plush lined case

THE "SG" (DELUXE)



BODY SPECIFICATIONS

Contoured solid mahogany construction

- Double cutaway design
- Chrome-plated adjustable Tune-O-Matic bridge with chrome-plated stop-bar tailpiece
- Uniquely shaped fingerrest with white revealed edge
- One exposed front Humbucking pickup coupled to an all new exposed super hot specially wound rear "Velvet Brick"™ "Super Humbucking" pickup that features one cream and one black coil
- Individual tone and volume controls
- 3-position toggle switch for pickup selection (individual or both pickups simultaneously)
- Attractive, efficient black speed knobs
- Body size: Length 16", width 12-3/4", depth 1-5/16"

NECK SPECIFICATIONS

- 3-piece solid mahogany construction
- Width at fingerboard nut 1-11/16"
- Ebony fingerboard with dot inlays and corresponding side dots
- The unique Gibson branded peghead
- Deluxe chrome-plated individual machine heads
- Gibson truss rod with distinctive truss rod cover
- 22 frets
- 24-3/4" scale length

THE "SG" (DELUXE) • Natural Mahogany or Antique Mahogany finish
535 Faultless plush lined case

335-S STANDARD



BODY SPECIFICATIONS

Sculptured solid maple construction

- Unique double cutaway design offers easy access to higher playing positions
- Adjustable chrome-plated Tune-O-Matic bridge with adjustable chrome-plated stop-bar tailpiece
- Two newly designed high output Gibson Humbucking exposed pickups that feature one cream and one black coil
- Individual volume and tone controls
- 3-position toggle switch for pickup selection (individual or both pickups simultaneously)
- Attractive, efficient black speed knobs
- Body size: Length 17-1/8", width 13-7/8", depth 1-1/2"

NECK SPECIFICATIONS

- 3-piece solid maple construction
- Width at fingerboard nut 1-11/16"
- Rosewood fingerboard with dot inlays and corresponding side dots
- The new exclusive Gibson branded peghead
- Chrome-plated individual deluxe machine heads
- Gibson truss rod with distinctive truss rod cover
- 22 frets
- 24-3/4" scale length

335-S STANDARD • Autumn Maple finish

540 Faultless plush lined case

SONEX-180 CUSTOM



BODY SPECIFICATIONS

The new Gibson exclusive Multi-Phonic™ body construction • Single cutaway design • Adjustable chrome-plated Tune-O-Matic bridge with chrome-plated stop-bar tailpiece • Uniquely shaped double sided fingerrest with white revealed edge • Two high output Gibson "Dirty Fingers" 3-point adjustable exposed pickups that feature one cream and one black coil • 3-position toggle switch for pickup selection (individual or both pickups simultaneously) • Coil tap switch to place either humbucking pickup into a single point non-humbucking mode • Attractive, efficient black speed knobs • Body size: Length 17-1/4", width 13", depth 1-3/4"

NECK SPECIFICATIONS

3-piece solid maple construction • Width at fingerboard nut 1-11/16" • Ebony fingerboard with dot inlays and corresponding side dots • Individually enclosed chrome-plated machine heads • Gibson truss rod with distinctive truss rod cover • 22 frets • 24-3/4" scale length

SONEX-180 CUSTOM • Ebony or White finish

180 Special Design Gibson case

SONEX-180 STANDARD



BODY SPECIFICATIONS

The new Gibson exclusive Multi-Phonic™ body construction • Single cutaway design • Adjustable chrome-plated Tune-O-Matic bridge with chrome-plated stop-bar tailpiece • Uniquely shaped double sided fingerrest with white revealed edge • Two high output special design Gibson "Super Humbucking" 3-point adjustable exposed pickups that feature one cream and one black coil • 3-position toggle switch for pickup selection (individual or both pickups simultaneously) • Coil tap switch to place either humbucking pickup into a single point non-humbucking mode • Attractive, efficient black speed knobs • Body size: Length 17-1/4", width 13", depth 1-3/4"

NECK SPECIFICATIONS

One piece select hardwood construction • Width at fingerboard nut 1-11/16" • Rosewood fingerboard with dot inlays and corresponding side dots • Individually enclosed chrome-plated machine heads • Gibson truss rod with distinctive truss rod cover • 22 frets • 24-3/4" scale length

SONEX-180 STANDARD • Ebony finish
180 Special Design Gibson case

SONEX-180 DELUXE



BODY SPECIFICATIONS

The new Gibson exclusive Multi-phonic™ body construction • Single cutaway design • Adjustable chrome-plated Tune-O-Matic bridge with chrome-plated stop-bar tailpiece • Uniquely shaped double sided fingerrest with white revealed edge • Two high output Humbucking 3-point adjustable exposed pickups that feature one black and one cream coil • 3-position toggle switch for pickup selection (individual or both pickups simultaneously) • Attractive, efficient black speed knobs • Body size: Length 17-1/4", width 13", depth 1-3/4"

NECK SPECIFICATIONS

One piece select hardwood construction • Width at fingerboard nut 1-11/16" • Rosewood fingerboard with dot inlays and corresponding side dots • Individually enclosed chrome-plated machine heads • Gibson truss rod with distinctive truss rod cover • 22 frets • 24-3/4" scale length

SONEX-180 DELUXE • Ebony finish
180 Special Design Gibson case

Instrument on left... Engineering Model of the Gibson Deluxe Electric Hawaiian Guitar made in 1938. Fingerboard inlaid with matching mother of pearl inlays at the octaves. Convenient top tuning pegs.

Instrument on the right...An unusual Ukelele Banjo made and assembled in 1923 by a Gibson craftsman of over forty years experience. The genuine mother of pearl is skillfully inlaid to form an artistic design in the fingerboard and peghead. The main rim and resonator rim are pearloid covered and the resonator back of curly maple is beautifully finished to bring out the natural grain of the wood. A unique, one of a kind instrument.

